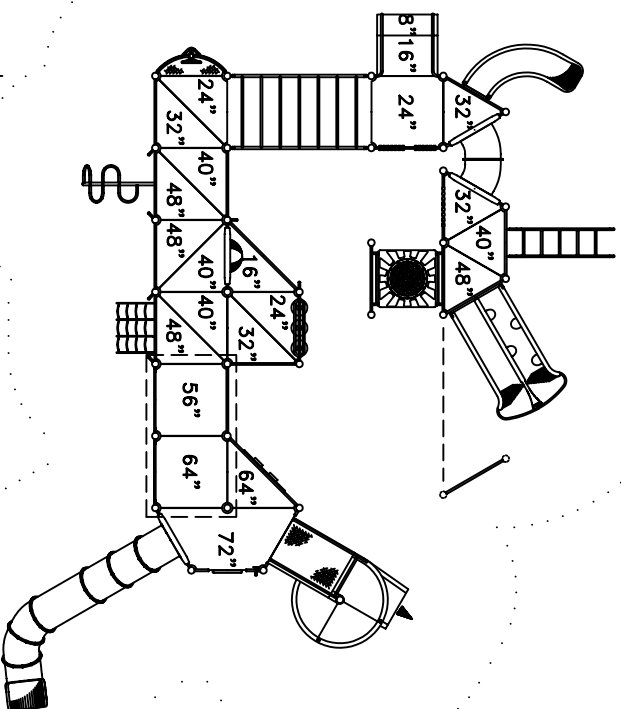


APPROPRIATE FOR CHILDREN 5 TO 12 YEARS OF AGE

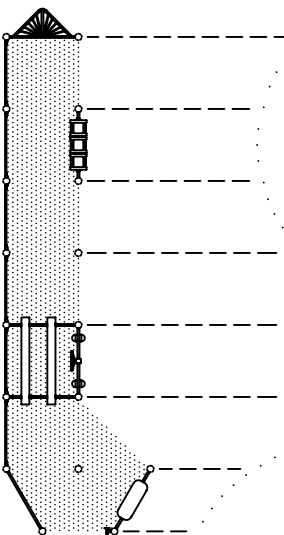
3831-03-PL FEATURES:

- ABACUS
- ACCESSIBLE ENTRANCE DECK
- ACCESSIBLE TRANSFER STATION
- ARCH LOOP CLIMBER
- BALUSTER WALL (4)
- BLOCK CLIMBER
- BUBBLE PANEL
- CHAIN CARGO NET
- CHIME WALL
- COW CATCHER
- DOUBLE ROOF WITH WELDED WIRE PANELS
- LOCOMOTIVE ENGINE AND WHEELS GRAPHIC PANELS
- LOOKOUT PLATFORM, BALUSTER WALL WITH SHIP'S WHEEL
- LOOP CLIMBER
- MAZE PANEL
- OVERHEAD LADDER
- SAND TABLE
- SCHOOL BUS, BALUSTER WALL WITH WHEEL
- SPELLING PANEL
- SPIRAL SLIDE CHUTE
- STATION PANEL
- STORE FRONT COUNTER TOP
- TALK TUBE
- TIC-TAC-TOE PANEL
- TOT SLIDE CHUTE, CURVED
- TUBE CHUTE, CURVED
- TUNNEL CRAWL
- VERTICAL LADDER
- WIDE SLIDE CHUTE, WAVE/SLALOM

SAFE USE ZONE BORDER



PLAY FEATURES
BENEATH DECKS



ACCESSIBILITY PROFILE:

- 23 TOTAL PLAY COMPONENTS
- 17 ELEVATED PLAY COMPONENTS (17 ACCESSIBLE)
- 6 GROUND LEVEL PLAY COMPONENTS (6 ACCESSIBLE)

WELCOME /
RULES SIGN

PLAY AREA, EQUIPMENT ONLY:
39' x 35' (11.9m x 10.7m)
MINIMUM SAFE USE ZONE:
52' x 47' (15.9m x 14.4m)

This drawing reveals the copyrighted intellectual property of Columbia Cascade Company. Not for use by others without our express, written authorization.

Authorization for use is hereby granted to architects, landscape architects and similar design professionals solely for the purpose of specifying Timberform products.



Scale 3/32"=1'-0"
Drawn by: AT
Ck'd by: CL
09-21-11
09-21-11

COLUMBIA CASCADE COMPANY
Makers of Timberform®, Pipeline®, RePlay®, Timberform®-2, InterPlay®, Cyclolops® and Cyclocker® Products.
1300 S.W. Sixth Avenue, Suite 310
Portland, Oregon 97201-3464
Telephone 503/223-1157
Facsimile 503/223-4530
U.S.A.
WWW.TIMBERFORM.COM

Title:
THEMED PLAY
MODEL NO. 3831-03-PL
COLUMBIA EXPRESS
AREA DRAWING

Drawing No. W-3831-03-PL

Sheet 1 of 1



0' 5' 10'