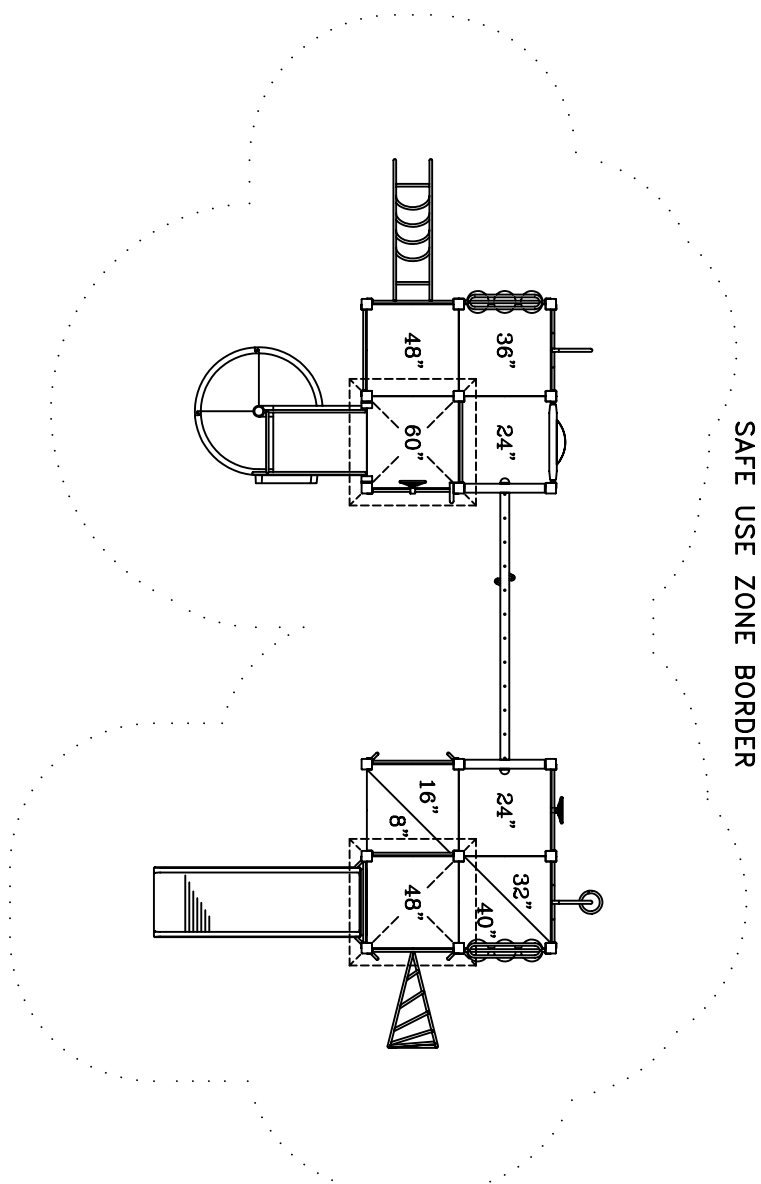
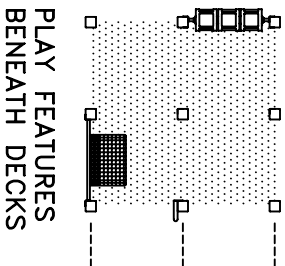


APPROPRIATE FOR CHILDREN 5 TO 12 YEARS OF AGE

4872-TF FEATURES:

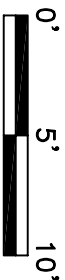
- ACCESSIBLE ENTRANCE DECK
- ADDITION PANEL
- BALUSTER WALL (3)
- BALUSTER WALL WITH SHIP'S WHEEL (2)
- COIL CLIMBER
- CONVEX/FLAT MIRROR PANEL
- FIREFIGHTER'S POLE
- KID'S BENCH ON BALUSTER WALL
- LOOP CLIMBER
- SPELLING PANEL
- SPIRAL SLIDE CHUTE
- TALK TUBE
- TIC-TAC-TOE
- TRACK RIDE 12' (366cm)
- TWISTING CLIMBER
- WIDE CHUTE
- WOOD ROOF (2)



WELCOME/  
RULES SIGN

PLAY AREA, EQUIPMENT ONLY:  
38' x 19' (11.6m x 5.8m)  
MINIMUM SAFE USE ZONE:  
50' x 31' (15.3m x 9.5m)

- ACCESSIBILITY PROFILE:
- 16 TOTAL PLAY COMPONENTS
  - 12 ELEVATED PLAY COMPONENTS (6 ACCESSIBLE)
  - 4 GROUND LEVEL PLAY COMPONENTS (4 ACCESSIBLE)



This drawing reveals the copyrighted intellectual property of Columbia Cascade Company. Not for use by others without our express, written authorization.

Authorization for use is hereby granted to architects, landscape architects and similar design professionals solely for the purpose of specifying Timberform products.

Scale: 1/8"=1'-0"  
 Drawn by: TB  
 CK'd by: CL  
 08-10-11  
 08-10-11



**COLUMBIA CASCADE COMPANY**  
 Makers of Timberform®, Pipeline®, Replay®, Timberform®-2, InterPlay®, Cycloops® and Cyclocker® Products.

1300 S.W. Sixth Avenue, Suite 310 Telephone 503/223-1157  
 Portland, Oregon 97201-3464 Facsimile 503/223-4530  
 U.S.A.

WWW.TIMBERFORM.COM

Title: **TIMBERFORM**  
 MODEL NO. 4872-TF  
 AREA DRAWING

Drawing No. **W-4872-TF** Sheet **1** of **1**