

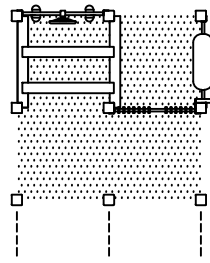
4890-TF FEATURES:

- ABACUS
- ACCESSIBLE TRANSFER STATION
- ADDITION PANEL
- ARCH RING CLIMBER
- BALUSTER WALL (6)
- BALUSTER WALL WITH SHIP'S WHEEL
- BUBBLE PANEL
- CARGO NET
- KID SPINNER
- OVERHEAD SAFETY LADDER
- SCHOOL BUS WITH WHEEL AND WOOD SEATS
- SLIDE CHUTE, STRAIGHT
- SPELLING PANEL, BALUSTER WALL
- SPIRAL SLIDE CHUTE
- STOREFRONT COUNTERTOP
- SUSPENSION BRIDGE, PERFORATED STEEL, WITH BALUSTER WALLS
- TALK TUBE
- TRACK RIDE, 8' (244cm)
- TUNNEL CRAWL WITH WINDOWS
- VERTICAL LOOP CLIMBER
- VERTICAL SAFETY CLIMBER
- WOOD ROOF

ACCESSIBILITY PROFILE:

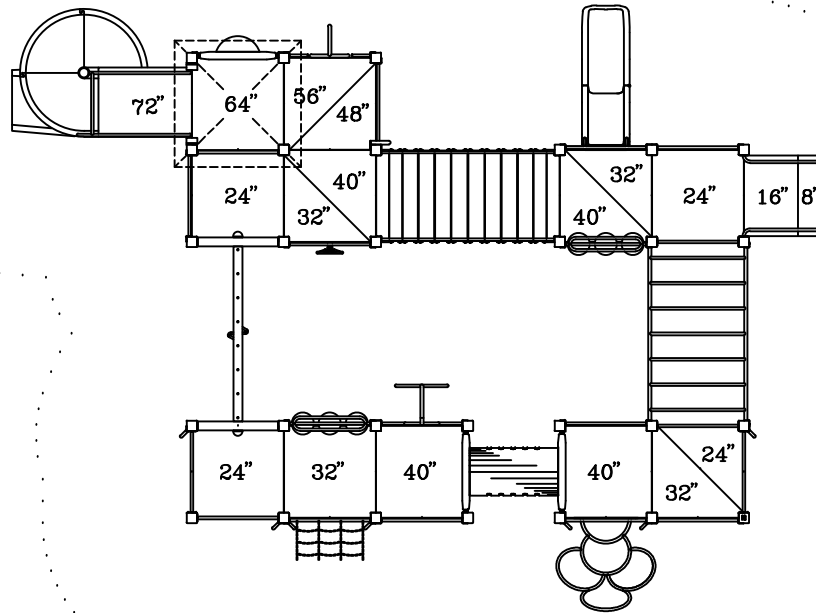
- 19 TOTAL PLAY COMPONENTS
- 14 ELEVATED PLAY COMPONENTS (14 ACCESSIBLE)
- 5 GROUND LEVEL PLAY COMPONENTS (5 ACCESSIBLE)

APPROPRIATE FOR CHILDREN 5 TO 12 YEARS OF AGE



PLAY FEATURES BENEATH DECKS

SAFE USE ZONE BORDER



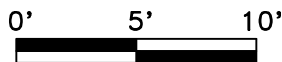
WELCOME/
RULES SIGN

PLAY AREA, EQUIPMENT ONLY:
34' x 26' (10.4m x 7.9m)

MINIMUM SAFE USE ZONE:
46' x 38' (14.0m x 11.6m)

PLAY AREA, KID SPINNER ONLY:
2' x 2' (0.7m x 0.7m)

MINIMUM SAFE USE ZONE:
14' x 14' (4.3m x 4.3m)



This drawing reveals the copyrighted intellectual property of Columbia Cascade Company. Not for use by others without our express, written authorization.

Authorization for use is hereby granted to architects, landscape architects and similar design professionals solely for the purpose of specifying TimberForm products.

△ 07-02-15 UPDATE SLIDE, TUNNEL AT/lan

| | | | |
|-------|--------------|--------------|----------|
| Scale | 1/8" = 1'-0" | Drawn by: TB | 08-10-11 |
| | | Ck'd by: CL | 08-10-11 |



COLUMBIA CASCADE COMPANY

Makers of TimberForm®, PipeLine®, RePlay®, TimberForm®-2, InterPlay®, CycLoops® and CycLocker® Products.

1300 S.W. Sixth Avenue, Suite 310 Telephone 503/223-1157
Portland, Oregon 97201-3464 Facsimile 503/223-4530
U.S.A.

WWW.TIMBERFORM.COM

Title:
TIMBERFORM
MODEL NO. 4890-TF
AREA DRAWING

Drawing No.
W-4890-TF

Sheet
1 of 1