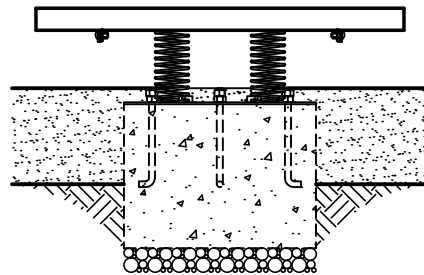


**TOP VIEW**  
SCALE: 1/2" = 1'-0"

0'-10" (254 mm)  
TOP OF SPRING PAD

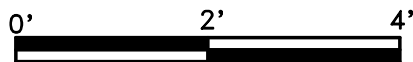
---

0'-0" (0 mm)  
FINISHED GRADE



**NOTE:**  
CONCRETE FOOTING AND NO. 4 REBAR (BY OTHERS) PER LOCAL SOIL CONDITIONS. CONSULT PROJECT ENGINEER FOR EXACT REQUIREMENTS.

**FRONT VIEW**  
SCALE: 1/2" = 1'-0"

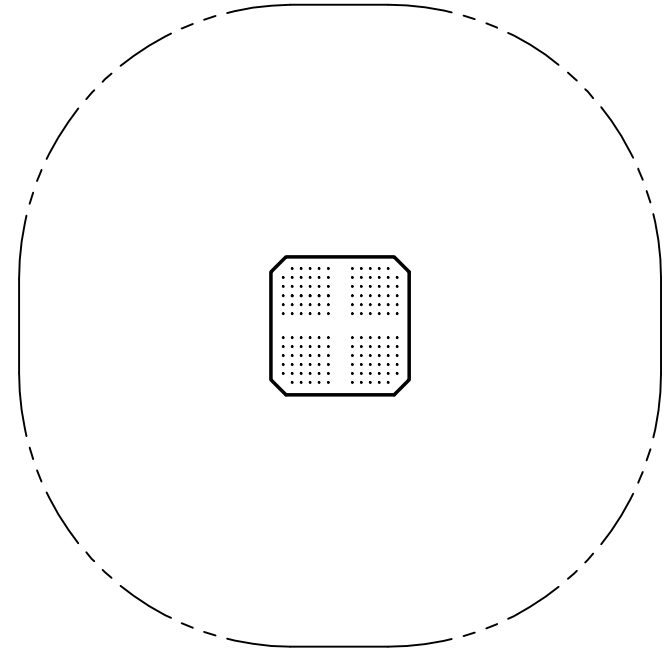


This drawing reveals the copyrighted intellectual property of Columbia Cascade Company. Not for use by others without our express, written authorization.

Authorization for use is hereby granted to architects, landscape architects and similar design professionals solely for the purpose of specifying TimberForm products.



Scale	Drawn by: AT	07-26-12
NOTED	Ck'd by: CL	07-26-12



**PLAN VIEW WITH USE ZONE**  
SCALE: 3/16" = 1'-0"

**EQUIPMENT ONLY:**  
4' x 4' (1.3m x 1.3m)

**MINIMUM SAFE USE ZONE:**  
18' x 18' (5.5m x 5.5m)



**COLUMBIA CASCADE COMPANY**

Makers of TimberForm®, PipeLine®, RePlay®, TimberForm®-2, InterPlay®, CycLoops® and CycLocker® Products.

1300 S.W. Sixth Avenue, Suite 310 Telephone 503/223-1157  
Portland, Oregon 97201-3464 Facsimile 503/223-4530  
U.S.A.

WWW.TIMBERFORM.COM

Title:  
SEPARATES  
MODEL NO. 1600-03  
SPRING PAD  
(BROWN PLASTIC COATED  
PERFORATED STEEL)

Drawing No.  
W-1600-03

Sheet  
1 of 1