

TOP VIEW

SCALE: 3/8" = 1'-0"

3'-7" (1092 mm)

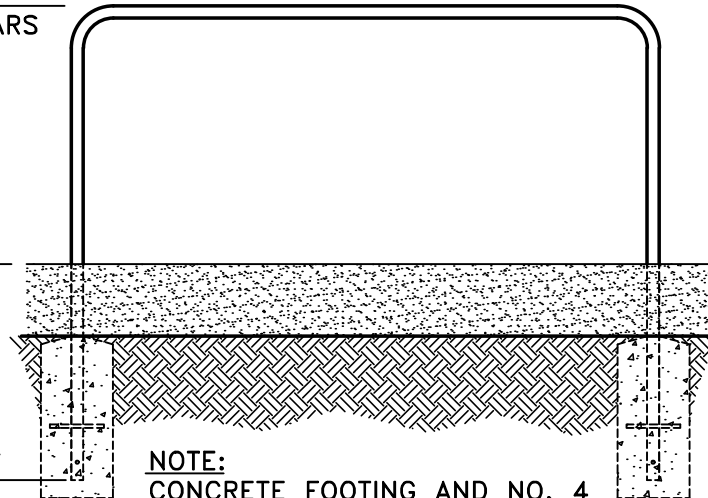
TOP OF PARALLEL BARS

0'-0" (0 mm)

FINISHED GRADE

-(3'-0") BOTTOM OF

-(914 mm) PIPE

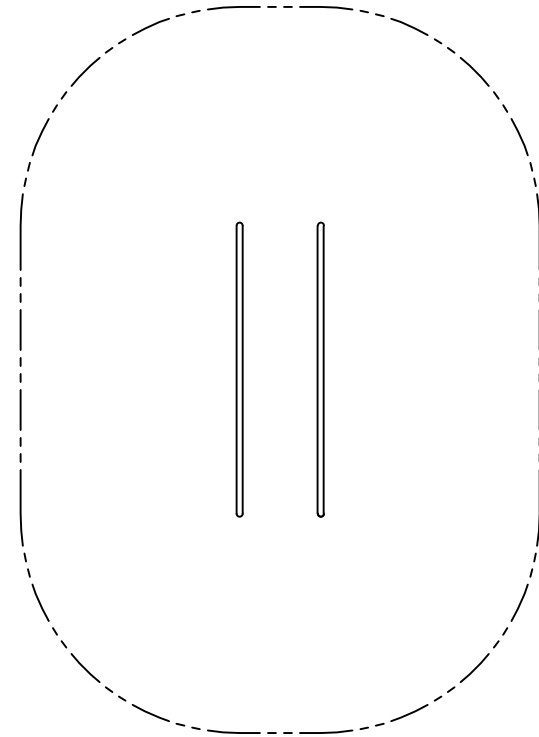


NOTE:

CONCRETE FOOTING AND NO. 4 REBAR (BY OTHERS) PER LOCAL SOIL CONDITIONS. CONSULT PROJECT ENGINEER FOR EXACT REQUIREMENTS.

FRONT VIEW

SCALE: 3/8" = 1'-0"



PLAN VIEW WITH USE ZONE

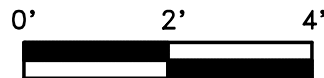
SCALE: 3/16" = 1'-0"

EQUIPMENT ONLY:

3' x 9' (1.0m x 2.8m)

MINIMUM SAFE USE ZONE:

15' x 21' (4.6m x 6.5m)



This drawing reveals the copyrighted intellectual property of Columbia Cascade Company. Not for use by others without our express, written authorization.

Authorization for use is hereby granted to architects, landscape architects and similar design professionals solely for the purpose of specifying TimberForm products.



Scale	Drawn by: AT	07-26-12
NOTED	Ck'd by: CL	07-26-12



COLUMBIA CASCADE COMPANY

Makers of TimberForm®, PipeLine®, RePlay®, TimberForm®-2, InterPlay®, CycLoops® and CycLocker® Products.

1300 S.W. Sixth Avenue, Suite 310 Telephone 503/223-1157
Portland, Oregon 97201-3464 Facsimile 503/223-4530
U.S.A.

WWW.TIMBERFORM.COM

Title:

SEPARATES
MODEL NO. 1695
PARALLEL BARS

Drawing No.
W-1695

Sheet
1 of 1