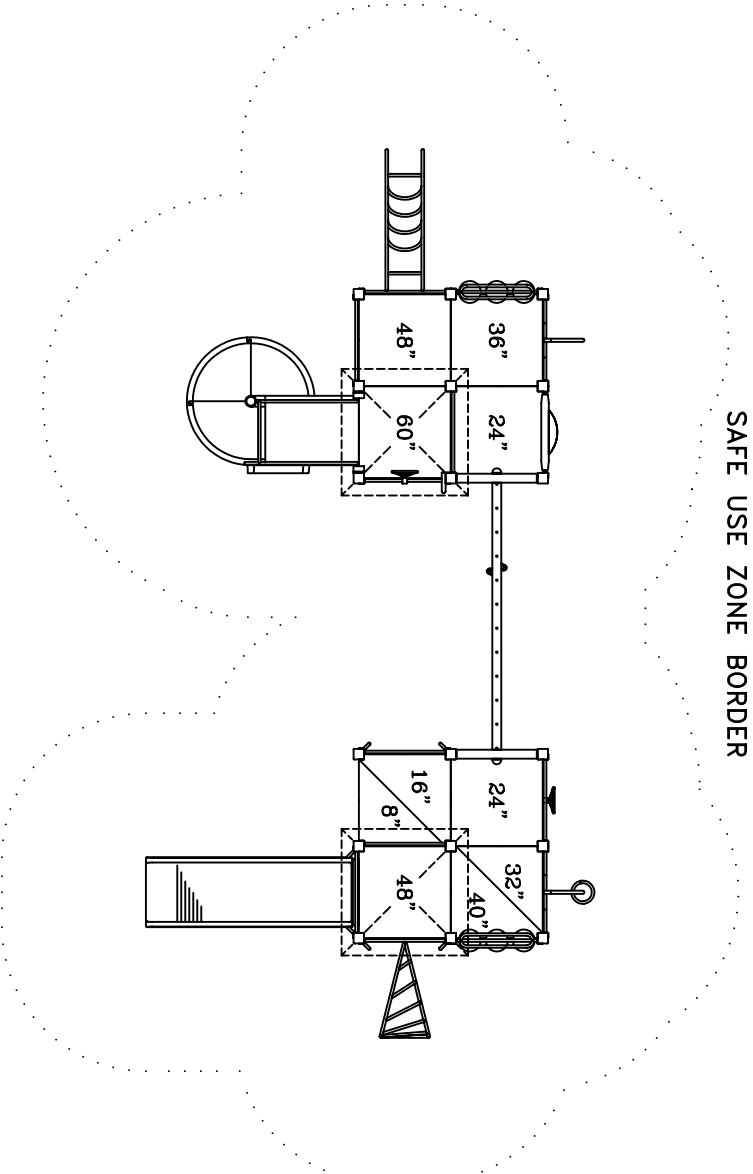
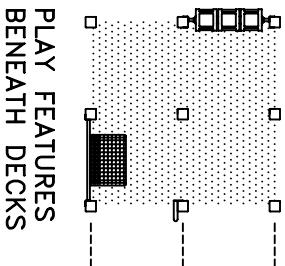


APPROPRIATE FOR CHILDREN 5 TO 12 YEARS OF AGE

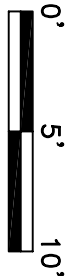
4872-RP FEATURES:

- ACCESSIBLE ENTRANCE DECK
- ADDITION PANEL
- BALUSTER WALL (3)
- BALUSTER WALL WITH SHIP'S WHEEL (2)
- COIL CLIMBER
- CONVEX/FLAT MIRROR PANEL
- FIREFIGHTER'S POLE
- KID'S BENCH ON BALUSTER WALL
- LOOP CLIMBER
- SPELLING PANEL
- SPIRAL SLIDE CHUTE
- TALK TUBE
- TIC-TAC-TOE
- TRACK RIDE 12' (366cm)
- TWISTING CLIMBER
- WIDE CHUTE
- RECYCLED PLASTIC ROOF (2)



- ACCESSIBILITY PROFILE:
- 16 TOTAL PLAY COMPONENTS
 - 12 ELEVATED PLAY COMPONENTS (6 ACCESSIBLE)
 - 4 GROUND LEVEL PLAY COMPONENTS (4 ACCESSIBLE)

PLAY AREA, EQUIPMENT ONLY:
38' x 19' (11.6m x 5.8m)
MINIMUM SAFE USE ZONE:
50' x 31' (15.3m x 9.5m)



This drawing reveals the copyrighted intellectual property of Columbia Cascade Company. Not for use by others without our express, written authorization.
Authorization for use is hereby granted to architects, interior designers and similar design professionals solely for the purpose of specifying Timberform products.

Scale 1/8"=1'-0"
Drawn by: TB
CK'd by: CL
08-10-11
08-10-11



COLUMBIA CASCADE COMPANY

Makers of Timberform®, Pipeline®, Replay®, Timberform®-2, InterPlay®, Cyclolops® and Cyclocker® Products.

1300 S.W. Sixth Avenue, Suite 310 Telephone 503/223-1157
Portland, Oregon 97201-3464 Facsimile 503/223-4530
U.S.A.
WWW.TIMBERFORM.COM

Title: **TIMBERFORM REPLAY**
MODEL NO. 4872-RP
AREA DRAWING

Drawing No. **W-4872-RP**
Sheet **1** of **1**